



BEYOND YOUR IMAGINATION

No limit, no boundaries



WWW.KIMPLEBOATS.CO

KIMPLE



PRODUCT CATALOG

THE ORIGINAL ALL-WELDED HIGH PERFORMANCE ALUMINUM BOAT

TABLE OF CONTENTS

目录

03

Company Overview

公司概况

05

K Series

K系列

17

HA Series

HA系列

23

Sniper Series

S系列

43

Hunter Series

猎人系列

45

River Runners

多人承载艇

47

Sea Rangers

Sea Ranger 系列

49

Adventure Series

A系列

33

Streamer Series

极光系列

37

Jon Boats

Jon平底船系列

39

Explorer Series

探险家

41

Voyager

海钓船

51

Catch Series

鲨鱼系列

53

Angler Series

平底船系列

55

Trout Series

Trout系列

57

Join Us

加入我们

ABOUT US

Kimple is a registered brand in New Zealand, headquartered in Taiwan, and manufacturing site in Jiaxing Zhejiang, China. Kimple specializes in aluminum boats alloy boats design and manufacturing. With a large number of advanced machines and equipment, as well as exquisite craftsmanship, the excellent quality of the Kimple aluminum boats is guaranteed.

The size of our boats ranges from 3 to 12 meters. With an annual production capacity of 3,000 boats, Kimple exports to more than 40 countries around the world. Kimple has a world-class design team, while the members come from Australia, New Zealand, Sweden, and Taiwan, The team members dedicate their knowledge and traditional craftsmanship from their own cultures, combining with advanced innovative techniques, Kimple creates durable and practical aluminum boats.

As an international boat brand, Kimple optimizes static and dynamic performance, providing passengers with the best and safe riding experience on the water. Kimple' s aluminum boat is the best choice for your water ride.



Kimple boats may be not the best, but always be better.

————— *Laofan*



Distributors in **20** countries around the world

More and more countries will have our Distributors

New products





K175

Style

This newly 2022 Kimple K hull is a gem of engineering excellence. Making this boat easy to plane with outstanding turning performance. In addition, the boat maintains a smooth, steady, dry ride. This is one boat that exceeds your expectation

Hull layout



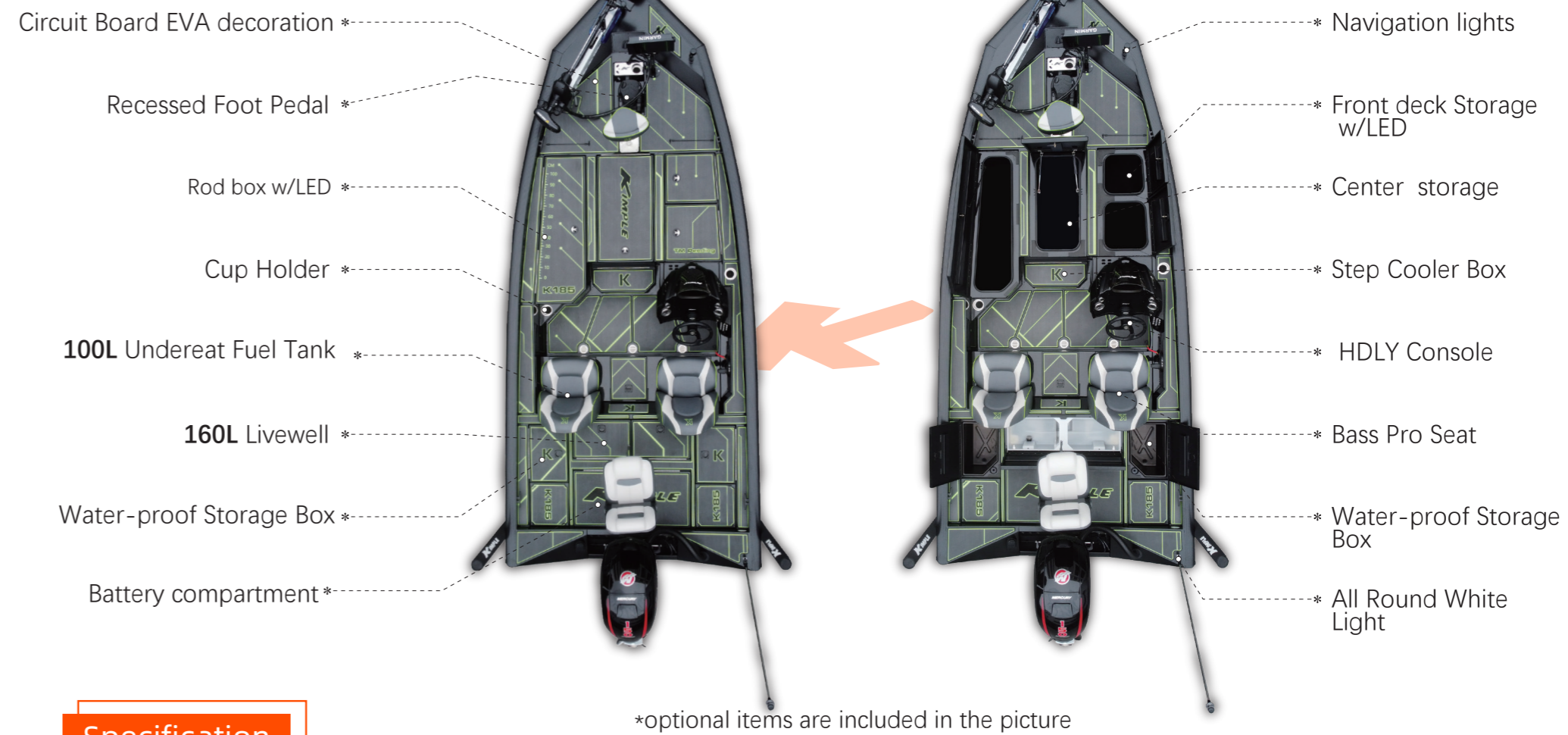
Specification

*optional items are included in the picture

5.30M	2.36M	MAX 620	MAX 115HP	4



Hull layout



K185 **Passion**

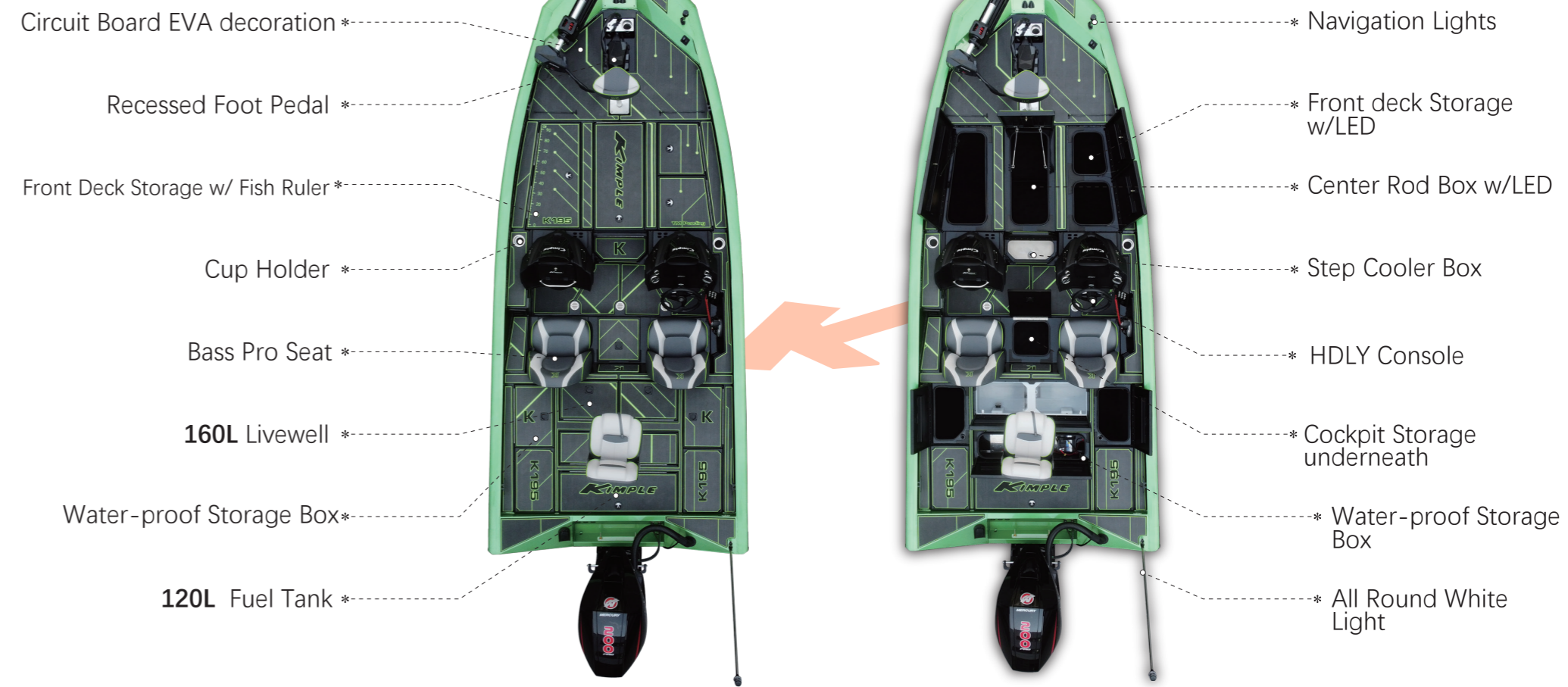
K185 inherits the excellent characteristic of the K serie making it a very reliable craft. Its excellent maneuverability gives great confidence to drivers while in control. In addition, longer boat length allows more spaces, greater load, and tons of thrill!

Specification

5.55M	2.40M	MAX 680	MAX 150HP	4



Hull layout



Specification

*optional items are included in the picture

5.80M	2.40M	MAX 700	MAX 200HP	4

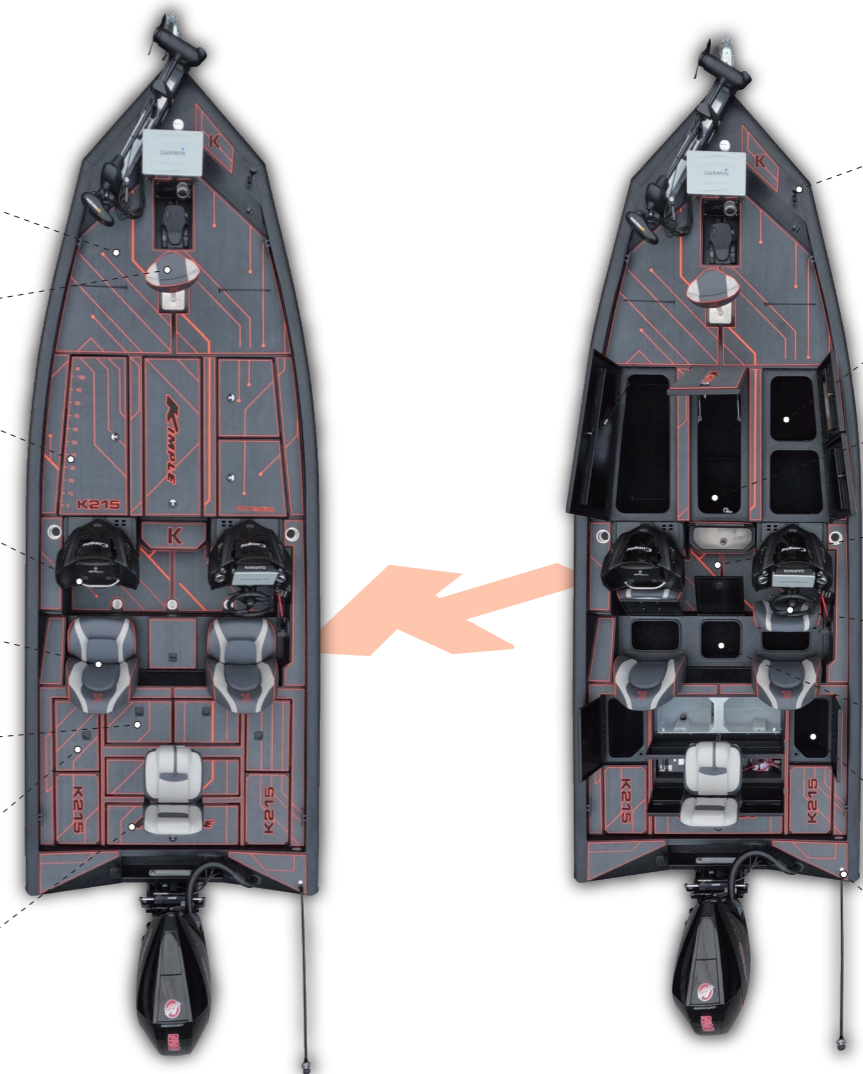
K195
Ambition

K195 is another major focus on the K series. This craft is able to mount bigger motors, carry heavier loads, and travel longer distance. Furthermore, its aggressive dual console design definitely makes it the spotlight!



Hull layout

- Circuit Board EVA decoration *
- Recessed Foot Pedal *
- Front Deck Storage w/ LED *
- Cup Holder *
- Bass Pro Seat *
- 160L Livewell *
- Water-proof Storage Box *
- 120L Fuel Tank *



- * Navigation Lights
- * Front deck Storage w/LED
- * Center Rod Box w/LED
- * Step Cooler Box
- * HDLY Console
- * Center Storage Underneath
- * Water-proof Storage Box
- * All Round White Light

Specification

*optional items are included in the picture

6.45M	2.40M	MAX 740	MAX 250HP	4
				

K215 Freedom

Being the largest ship in the K series, K215 can be equipped with up to 250 HP outboard motor, holds 4 passengers and tons of fishing gears. Similar to the other K series, its reliable body construction with agile maneuverability allows user to enjoy a full on thrill and excitement whether they are for casual or competitive events.

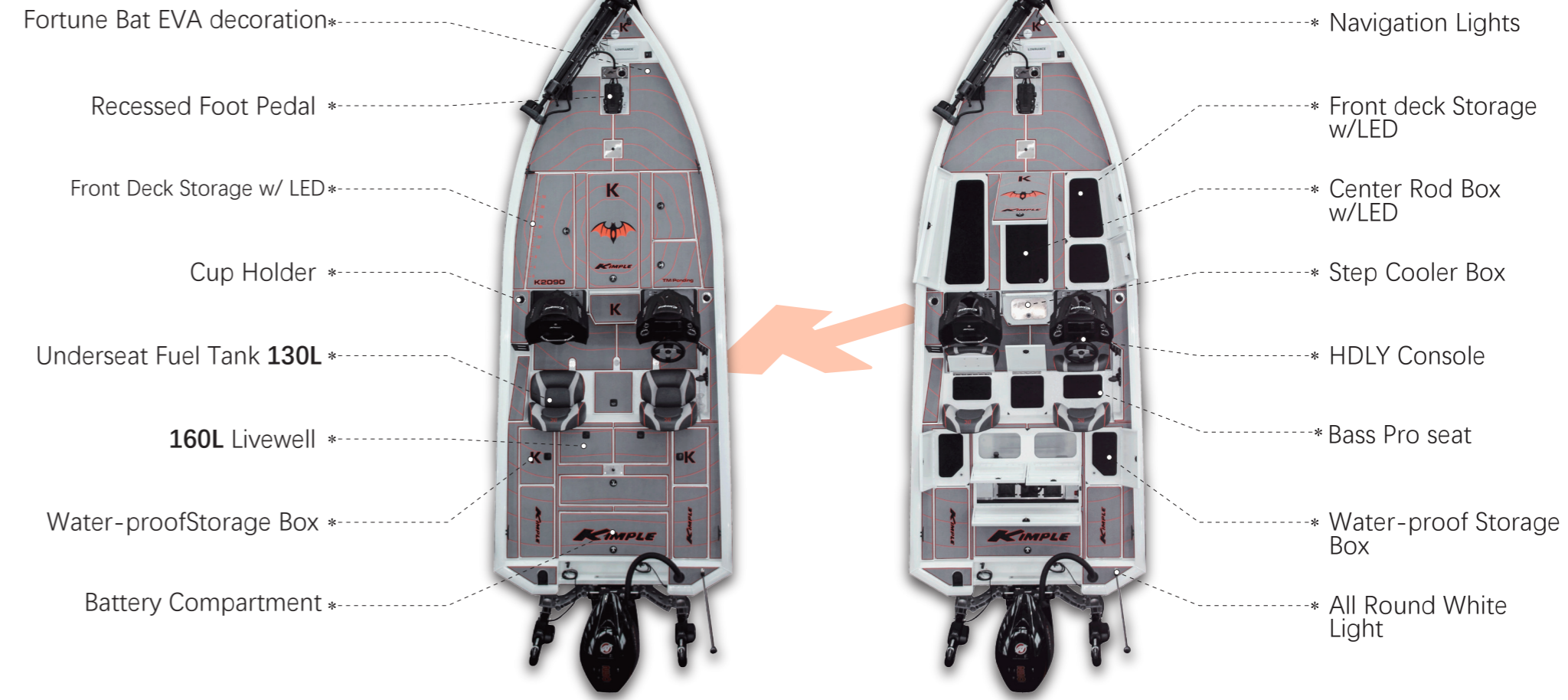


V2090

Combustion

People often ask if this is a fibre glass boat when they see our newly developed V2090. V2090 uses stretched formed gunnel that allows it to have a sleek look that's often mistaken for fibre glass. Aside from its appealing outlook, the hull design provides excellent stability and outstanding maneuverability. This is one boat that can attract a lot of attention.

Hull layout



*optional items are included in the picture

Specification

6.45M	2.40M	MAX 740	MAX 250HP	4



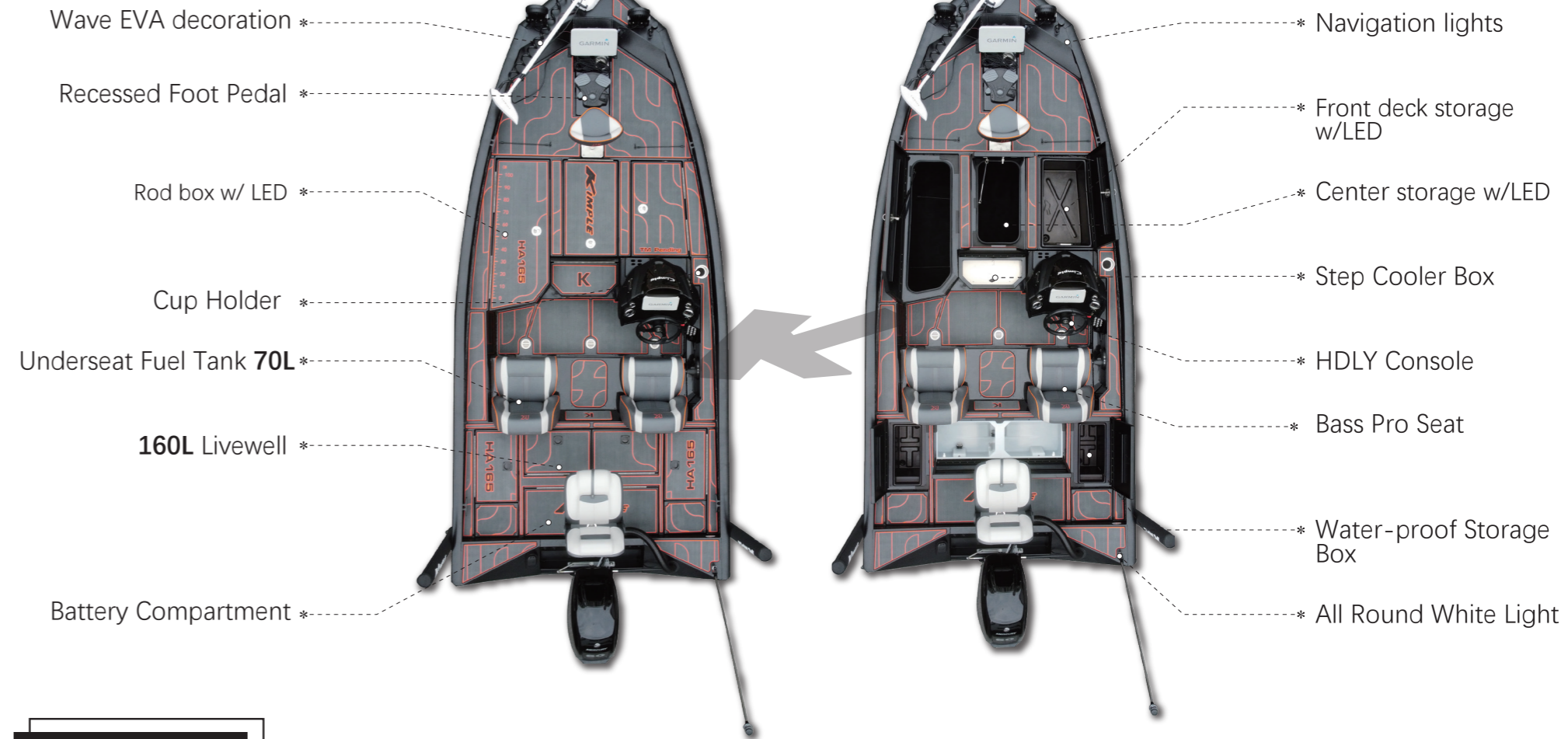
NEW PATTERN HA165

KIMPLE Is keep up with fashion trends



HA165

Hull layout



Specification

*optional items are included in the picture

4.98M

2.26M

MAX 543

MAX 90HP

3



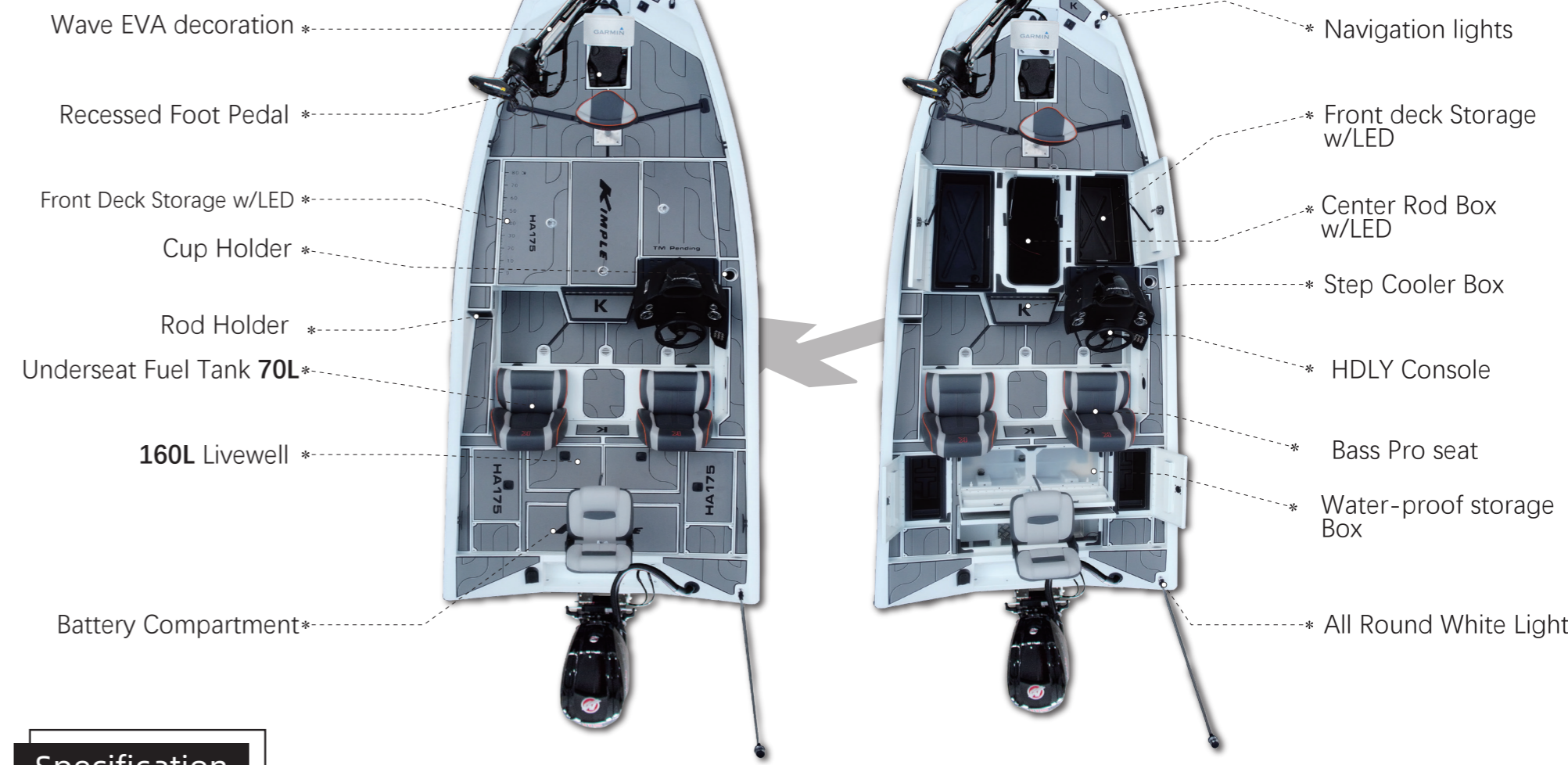
NEW PATTERN HA175

KIMPLE Is keep up with fashion trends



HA175

Hull layout



Specification

- *optional items are included in the picture
- 5.30M
 - 2.26M
 - MAX 620
 - MAX 115HP
 - 4

“ PURE FISHING
BASSBOATS
SPEED AND PASSION



SPECIFICATION



SPECIFICATIONS

	K438	S468	S498
Length	4.38M	4.68M	4.98M
Beam	1.80M	2.00M	2.10M
Transom Height	51cm	51cm	51cm
Weight(Boat Only)	344kg	346kg	401kg
Bottom Plate	2.0mm	2.5mm	2.5mm
Side Plate	2.0mm	2.5mm	2.5mm
Transom plate	3.0mm	3.0mm	4.0mm
Max hp	50hp	60hp	75hp
Build-in Fuel Tank	-	-	70L
Max People	3	2	3



K438

HIGH PERFORMANCE **BASSBOATS**

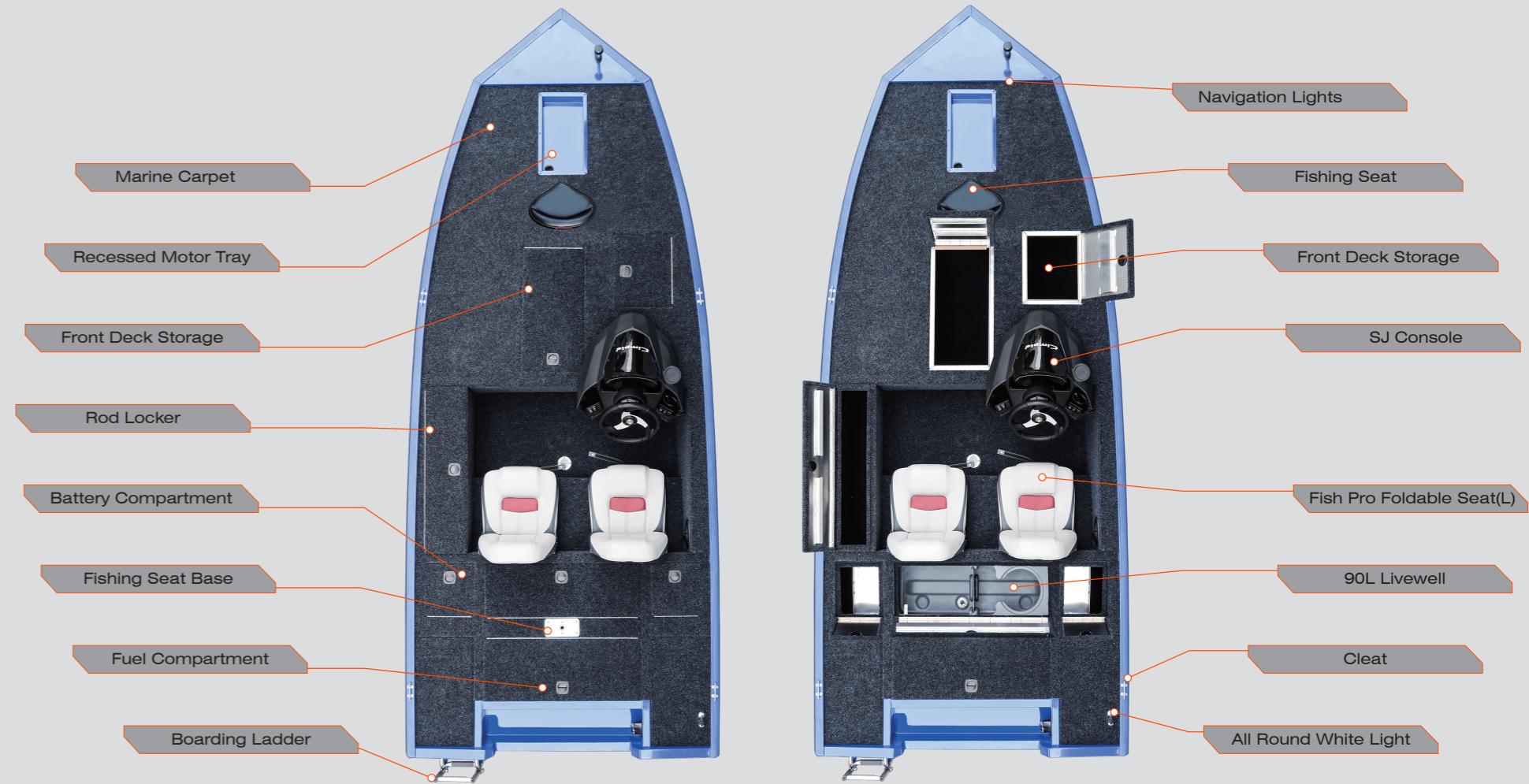
If you are interested in a small but versatile fishing boat, the Kimple K438 is the one that deserves your attention. In its 4.35 meter long 1.8meter wide hull, the K438 equips a 90L livewell, rod storage for fishing rods up to 7', and two under-floor storage compartments.

SMALL AND EXQUISITE

MULTI-FUNCTION

HIGH PERFORMANCE

COMFORT AND SAFETY



4.38 m

1.85 m

MAX 365
KG

MAX 50 HP

3



S468

HIGH PERFORMANCE **BASSBOATS**

The Kimple S468 is a versatile aluminum fishing boat. It is built for endurance and all the fishing essentials included. The quality of construction features, including all-welded construction and a stringer system, can also be found within it's bigger brothers.



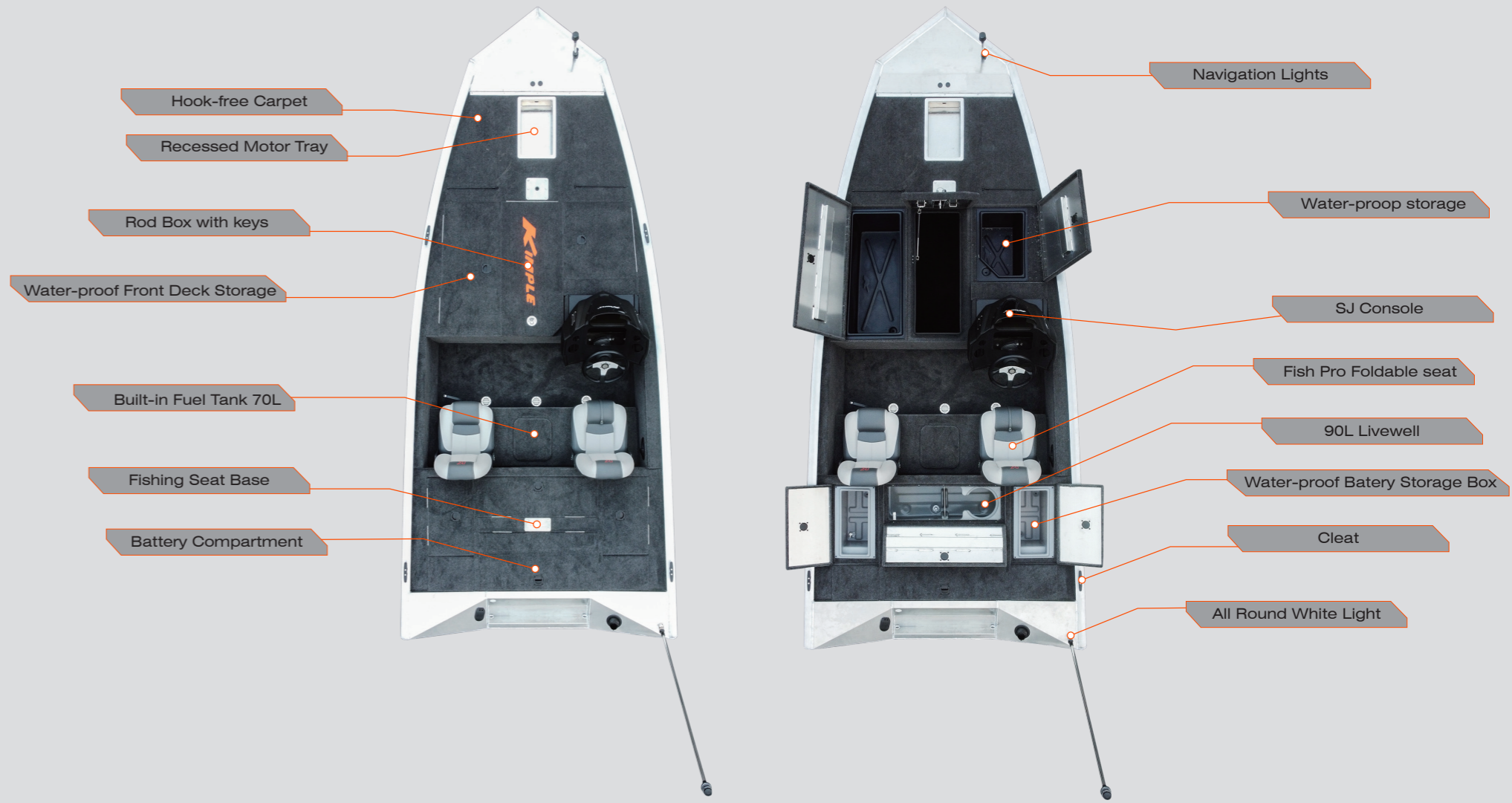
- 4.68 m
- 1.95 m
- MAX 370
- MAX 60 HP
- 2



S498

HIGH PERFORMANCE **BASSBOATS**

The Kimple S498 includes a variety of angler-friendly features, including rod lockers, storages, livewell, etc. It's a great first fishing boat for serious fisher chasing bass or whatever you like.



4.98 m 2.10 m MAX 388 MAX 75 HP 3
    

ENJOY LIFE



STREAMER SERIE M400

Unique hull design like the wing of a seagull for better stability, easier plane, and lesser wave resistance.



Streamer M400

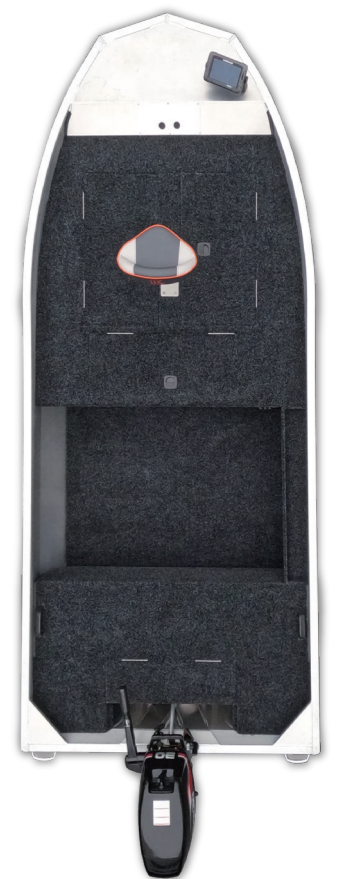
Length	4.00m
Beam	1.7m
Transom Height	51cm
Weight(Boat Only)	158kg
Bottom Thickness	2.0mm
Side Thickness	2.0mm
Max hp	30hp
Max Person	4



M400



M400 PLUS



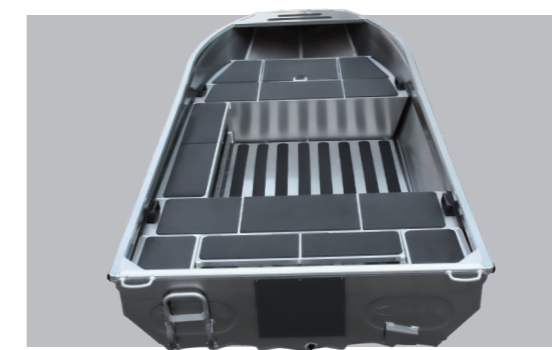
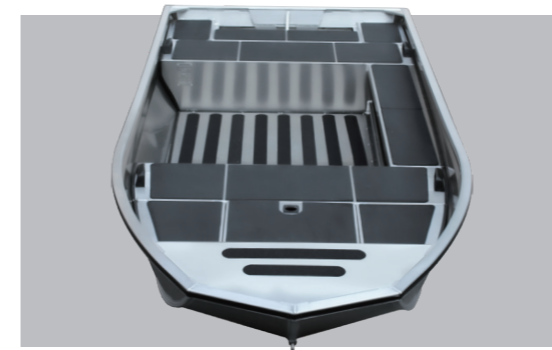
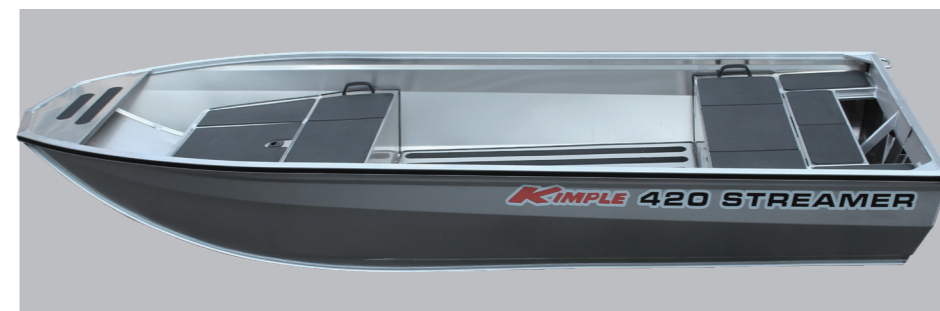
STREAMER M420

Unique hull design like the wing of a seagull for better stability, easier plane, and lesser wave resistance.



Streamer M420

Length	4.20m
Beam	1.68m
Transom Height	51cm
Weight(Boat Only)	184kg
Bottom Thickness	2.0mm
Side Thickness	2.0mm
Max hp	40hp
Max Person	4



M420



M420 PLUS



JON BOATS

Kimble Jon Boat is a sturdy, agile and affordable all-purpose boat. The roomy interior leaves plenty of room for fishing tackles or duck decoys

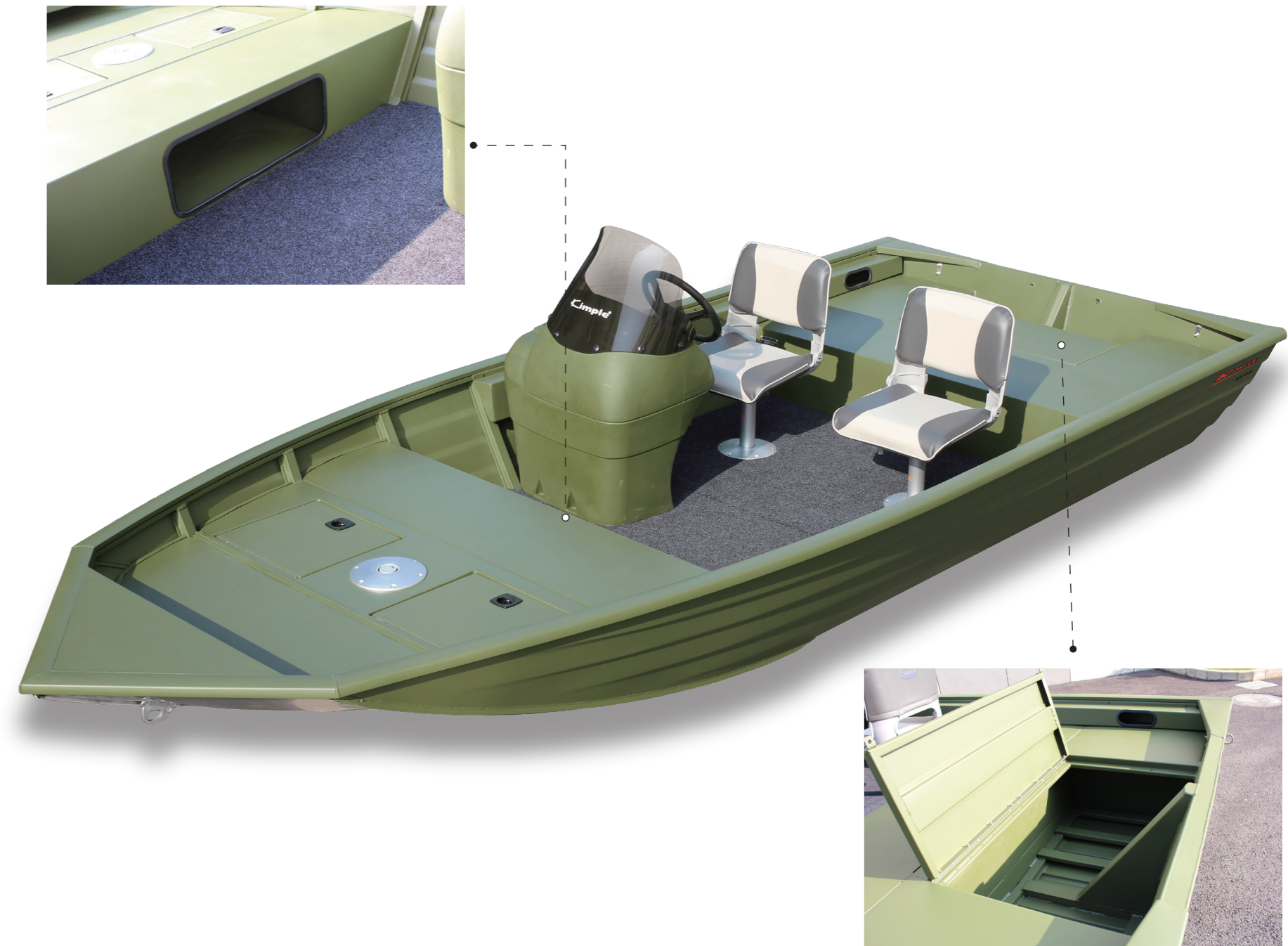
J4217



J4618



J4920



4.20M 1.70M MAX 319 KG MAX 20HP 3

4.60M 1.80M MAX 497 KG MAX 40HP 4

4.95M 2.00M MAX 585 KG MAX 60HP 5

EXPLORER

SPECIFICATIONS	E460DC	E460CC
Length	4.60M	4.60M
Beam	1.87M	1.87M
Max Depth	92cm	92cm
Weight(Boat Only)	304kg	304kg
Bottom Plate	3.0mm	3.0mm
Side Plate	2.0mm	2.0mm
Transom plate	3.0mm	3.0mm
Max hp	50hp	50hp
Max People	5	5



E460DC



E460CC



VOYAGER

SPECIFICATIONS	V520	V610
Length	5.00M	6.10M
Beam	2.10M	2.30M
Transom Height	56cm	56cm
Weight(Boat Only)	568kg	1180kg
Bottom Plate	4.0mm	4.0mm
Side Plate	4.0mm	4.0mm
Transom plate	5.0mm	5.0mm
Max hp	115hp	150hp
Max People	5	6



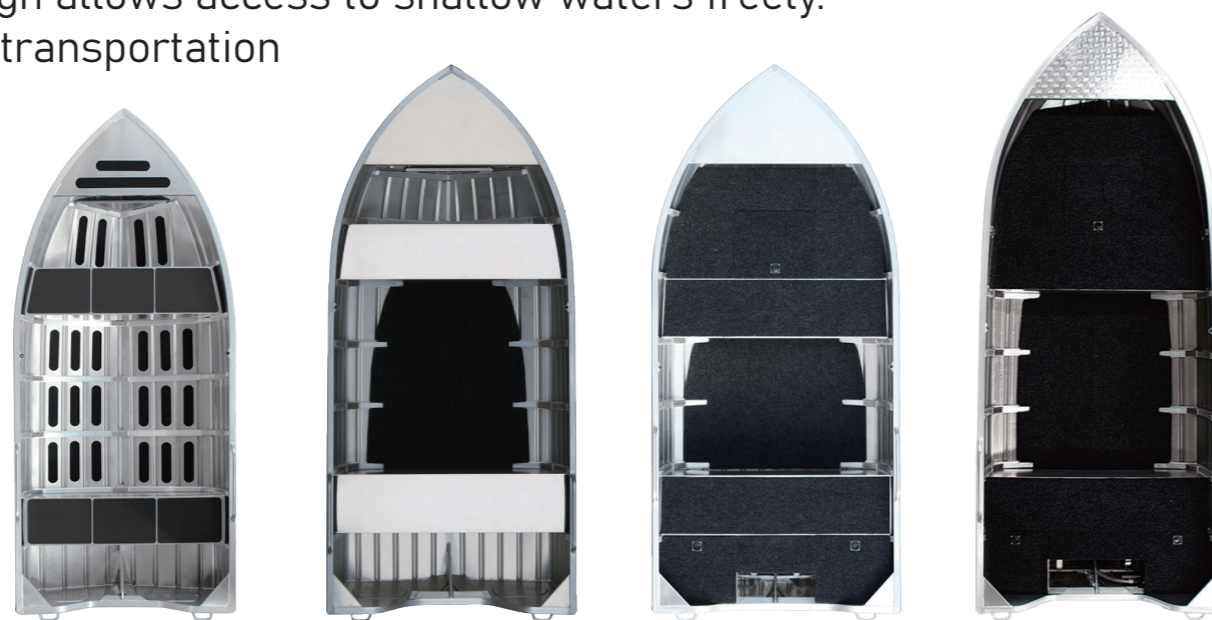
V520



V610

HUNTER

The Hunter series aluminum boat is designed for estuary fishing. The wide and low deadrise hull design allows access to shallow waters freely. Its size and mass provides efficient transportation on your vehicle's roof.



SPECIFICATIONS

	H370	H395	H395M	H460M
Length	3.70M	3.95M	3.95M	4.55M
Beam	1.64M	1.75M	1.75M	1.88M
Transom Height	38cm	38cm	51cm	51cm
Weight(Boat Only)	151kg	166kg	166kg	220kg
Bottom Plate	1.6mm	1.6mm	1.6mm	3.0mm
Side Plate	1.6mm	1.6mm	1.6mm	2.0mm
Max hp	15hp	45hp	45hp	50hp
Max People	3	4	4	4





The Angler punt is lightweight and suitable for car-top transportation. The simple boat is constructed of two pieces of marine-grade aluminum plates which maintain

RIVER RUNNER



SPECIFICATIONS

	R500	R530	R590	R700
Length	5.00M	5.30M	5.90M	7.00M
Beam	2.16M	2.16M	2.16M	2.16M
Max Depth	70cm	70cm	73cm	73cm
Transom Height	51cm	51cm	51cm	51cm
Weight(Boat Only)	204kg	424kg	468kg	535kg
Bottom Plate	2.0mm	3.0mm	3.0mm	3.0mm
Side Plate	2.0mm	2.0mm	2.0mm	2.0mm
Transom plate	3.0mm	3.0mm	3.0mm	3.0mm
Max hp	40-60hp	90hp	90hp	90hp
Max People	8	7	9	15

SEA RANGER

SPECIFICATIONS	G435B	G500
Length	4.35M	5.00M
Beam	1.80M	2.10M
Max Depth	96cm	95cm
Transom Height	51cm	51cm
Weight(Boat Only)	165kg	390kg
Bottom Plate	3.0mm	3.0mm
Side Plate	2.0mm	3.0mm
Transom plate	3.0mm	4.0mm
Max hp	60hp	90hp
Max People	4	5



G435B

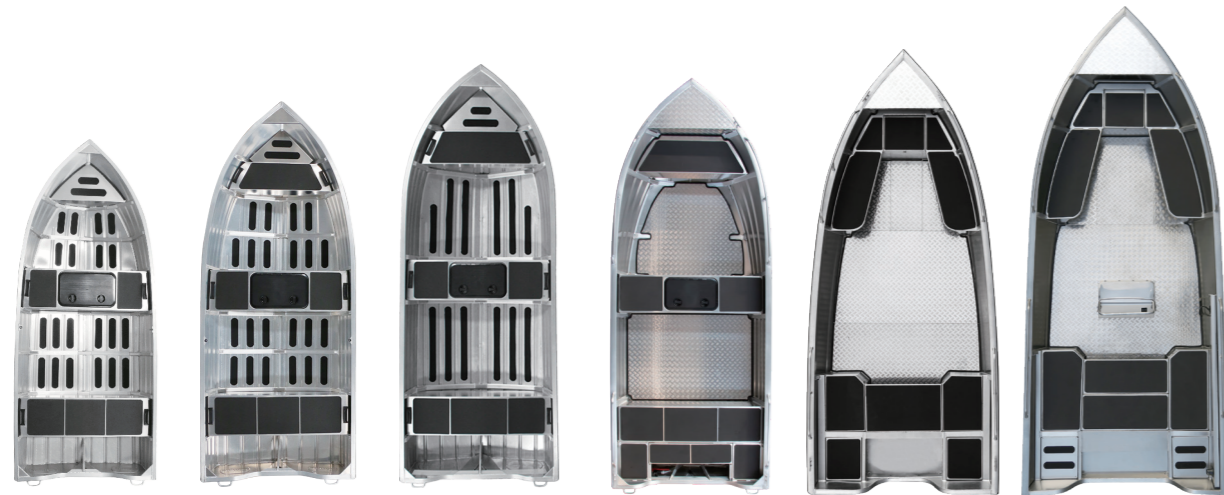


G500



ADVENTURE

Adventure 500 and 550 are adopting newly developed blade hulls that come with a sharp forefoot and three pairs of planing strakes. That gives you a dry and soft boarding experience.



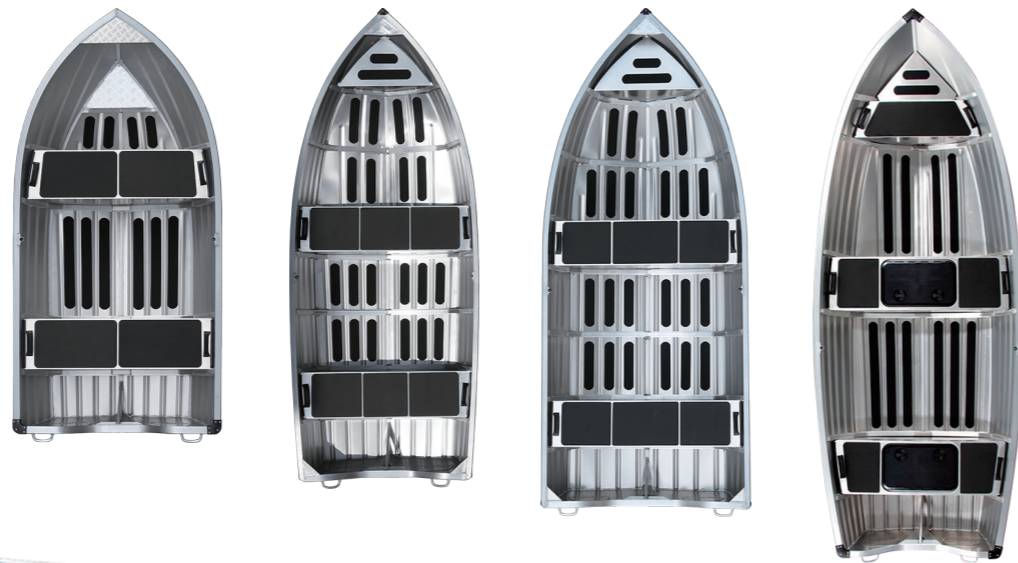
SPECIFICATIONS	A360	A390	A440W	A460	A500	A550
Length	3.58M	3.90M	4.40M	4.60M	5.00M	5.50M
Beam	1.48M	1.56M	1.65M	1.85M	2.10M	2.20M
Max Depth	68cm	72cm	79cm	86cm	105cm	115cm
Transom Height	38cm	38cm	51cm	51cm	64cm	64cm
Weight(Boat Only)	90kg	97kg	120kg	198kg	390kg	432kg
Bottom Plate	1.6mm	1.6mm	1.6mm	3.0mm	3.0mm	3.0mm
Side Plate	1.6mm	1.6mm	1.6mm	2.0mm	3.0mm	3.0mm
Transom plate	2.0mm	2.0mm	2.0mm	3.0mm	3.0mm	4.0mm
Max hp	15hp	15hp	20hp	40hp	60hp	90hp
Max People	4	4	4	5	5	6



CATCH



SPECIFICATIONS	C300	C365	C390	C430
Length	3.10M	3.60M	3.80M	4.25M
Beam	1.42M	1.44M	1.50M	1.64M
Transom Height	38cm	38cm	38cm	38cm
Weight(Boat Only)	60kg	70kg	98kg	108kg
Bottom Plate	1.6mm	1.6mm	1.6mm	1.6mm
Side Plate	1.6mm	1.6mm	1.6mm	1.6mm
Max hp	8hp	15hp	15hp	20hp
Max People	2	4	4	4



ANGLER

The Angler punt is lightweight and suitable for car-top transportation. The simple boat is constructed of two pieces of marine-grade aluminum plates which maintain



SPECIFICATIONS

MODEL	N330	N330W	N370	N370W	N400	N450	N520
Length	3.28M	3.30M	3.70M	3.70M	4.00M	4.50M	5.20M
Beam	1.16M	1.39M	1.15M	1.39M	1.37M	1.50M	2.00M
Max Depth	42cm	47cm	43cm	47cm	47cm	52cm	61cm
Transom Height	38cm	38cm	38cm	38cm	38cm	38cm	51cm
Weight(Boat Only)	46kg	66kg	56kg	64kg	82kg	112kg	186kg
Bottom Plate	1.4mm	1.4mm	1.4mm	1.4mm	1.6mm	2.5mm	2.0mm
Side Plate	1.4mm	1.4mm	1.4mm	1.4mm	1.6mm	1.6mm	2.0mm
Transom plate	2.0mm	2.0mm	2.0mm	2.0mm	2.0mm	3.0mm	3.0mm
Max hp	6hp	6hp	8hp	8hp	15hp	20hp	40hp
Max People	2	3	3	3	4	4	8



TROUT



SPECIFICATIONS	T300	T370	T440
Length	3.00M	3.70M	4.40M
Beam	1.40M	1.53M	1.65M
Max Depth	38cm	38cm	51cm
Weight(Boat Only)	48kg	64kg	102kg
Bottom Plate	1.4mm	1.4mm	2.0mm
Side Plate	1.4mm	1.4mm	1.6mm
Transom plate	2.0mm	2.0mm	2.0mm
Max hp	5hp	15hp	20hp
Max People	2	4	5



The trout has a V-shaped bottom at its bow and a flat bottom at its aft. This allows it to handle choppy waters effortlessly while providing excellent stability

KIMPLE COLOR OPTIONS

COLOR YOUR BOATS



GREEN



BLUE



ORANGE



RED



OLIVE GREEN



BLACK



SILVERY



WHITE

ORGANIZE FISHING COMPETITIONS

JOIN US

